

NEWS RELEASE

Contact: Ed Zimny
Address: Central MN Housing Partnership Inc.
37 28th Ave. North, Suite 102
St. Cloud, MN 56303

Phone: (320) 258-0673
Fax: (320) 259-9590
Email: ed@cmhp.net

January 13th, 2020

For Immediate Release

City of Wadena to Submit a Full Application for Rehab Funding

The City of Wadena has been invited to submit a Full Application for the Department of Employment and Economic Development's (DEED) Small Cities funding program. The City received notification from DEED that it was one of 33 communities who submitted a preliminary proposal, to be invited to make a full application. The Central Minnesota Housing Partnership (CMHP) has been asked by the City to compile and submit the Full Application, which is due February 28, 2020.

Informational meetings will be held on Thursday, January 30th at the Wadena City Hall located at 222 2nd St. SE. The first meeting will start at 5 PM and will cover information for low to moderate income homeowners who would be interested in having rehabilitation work completed on their homes. If you reside in one of the homeowner target areas

-more-

you are encouraged to attend this meeting. Maps of the target areas can be viewed at Wadena city hall or by contacting Ed Zimny at Central MN Housing Partnership, Inc. to request a copy.

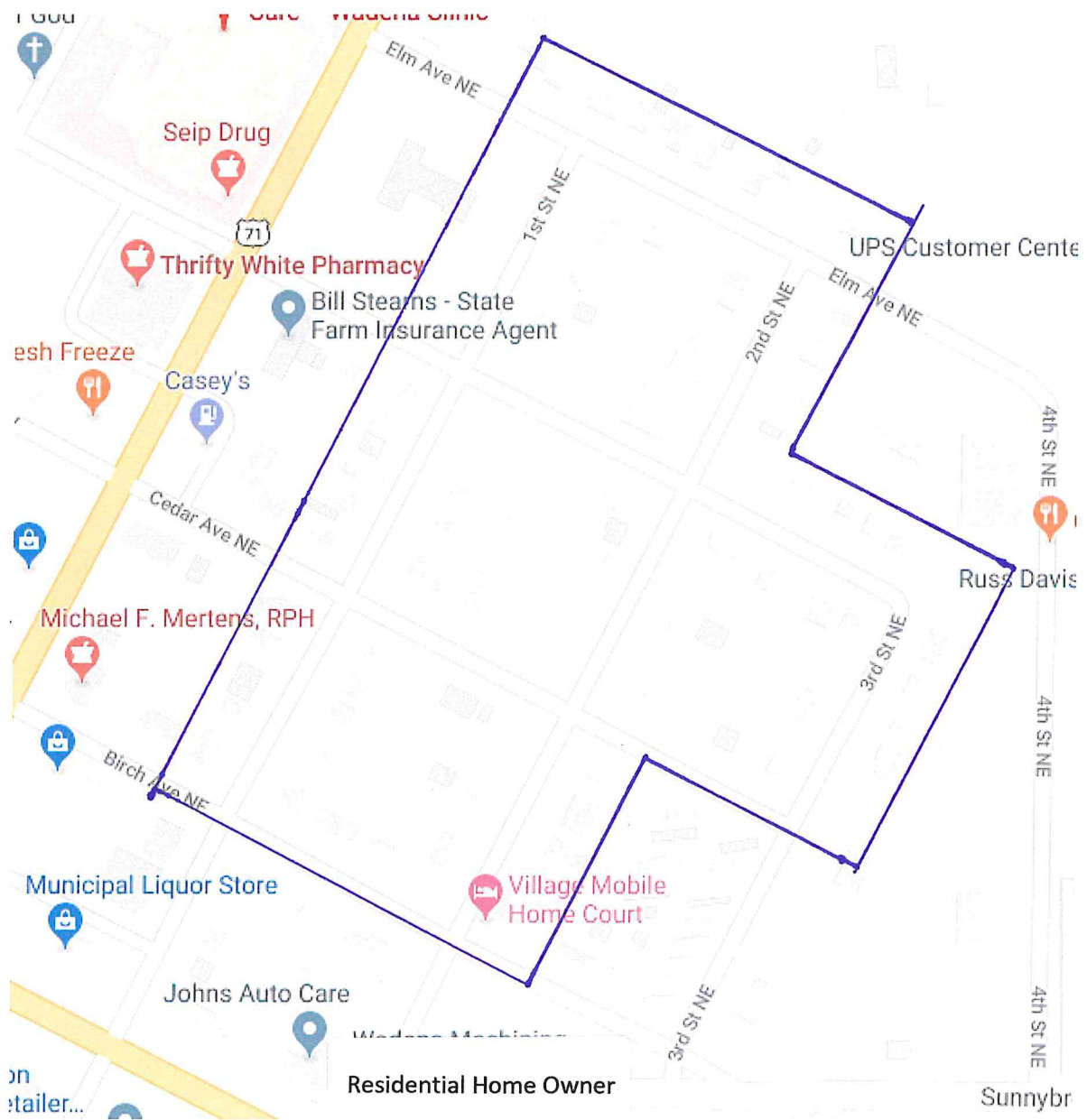
A second meeting starting at 6 PM will review rehab information for owners of rental properties. The rental program is for single family and multi-family rental properties located anywhere within the city limits.

A third meeting will begin at 7:00 PM and will review information for owners of commercial properties which are located in a target area that is part of the downtown business district.

“As you can imagine the applications for these funds are very competitive. Last year only twenty-six communities received their request for funding” said Ed Zimny, Program Manager for Central MN Housing Partnership. One of the ways to increase a community’s chances of receiving funding is to be able to demonstrate owner interest in using the program. A well-attended meeting will improve Wadena’s chances for a successful application. Mr. Zimny will provide an overview on how the program works, what the eligibility requirements are, and how much funding will be available on a per project basis.

If you are unable to attend the meeting but are interested in learning more about the program, please contact Ed Zimny at Central Minnesota Housing Partnership 320-258-0673 or ed@cmhp.net .

“###”



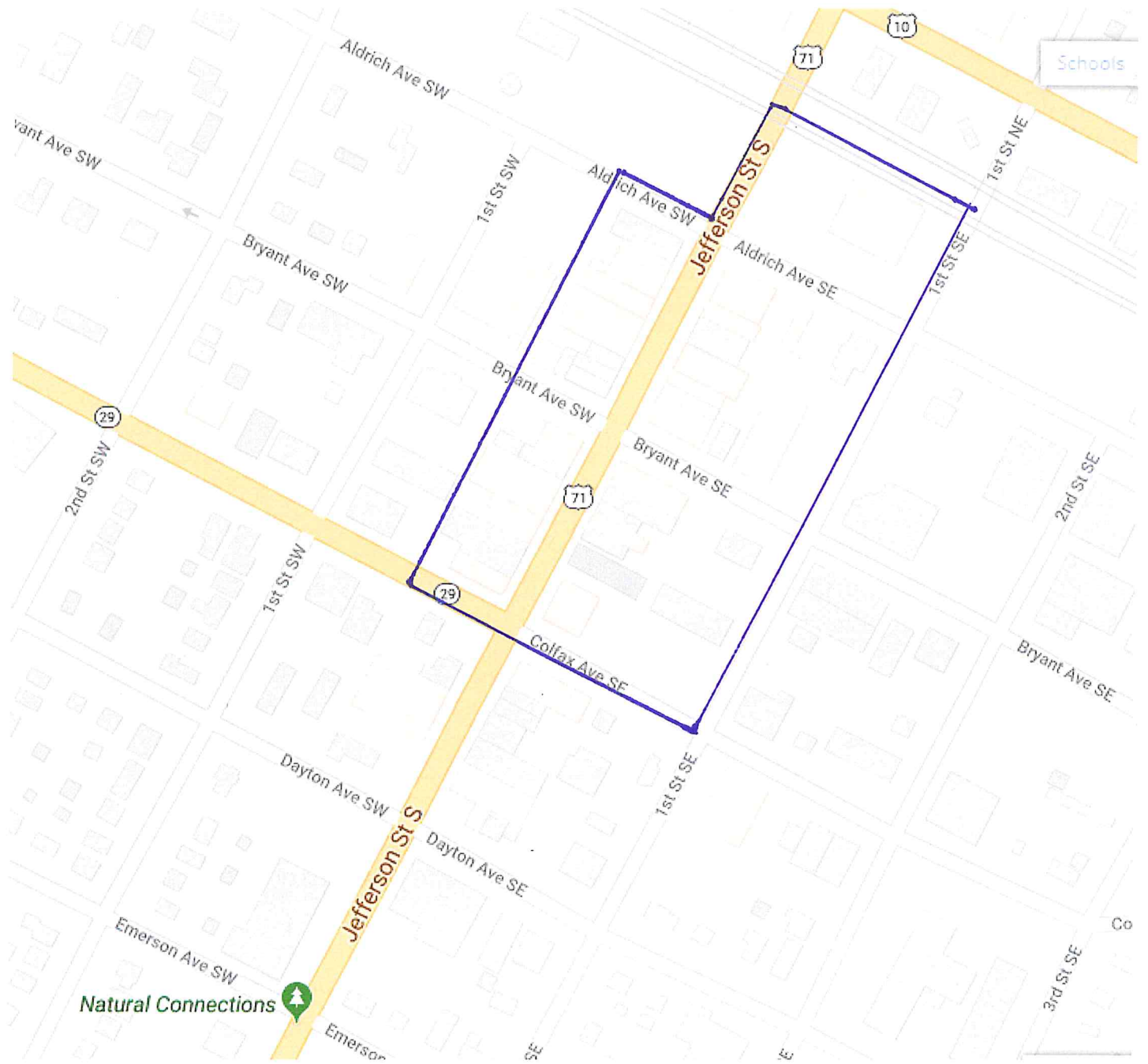
Main Target Area



Residential Home Owner

Map data ©2019 Un

Plan B Target Area



Commercial Target Area